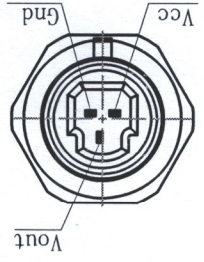
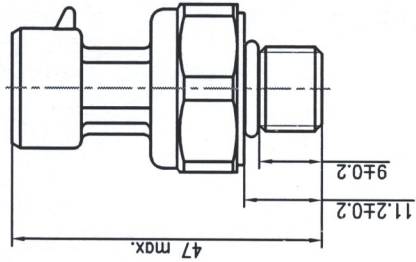
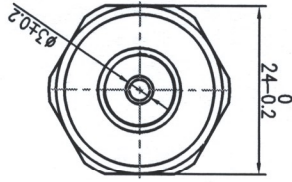
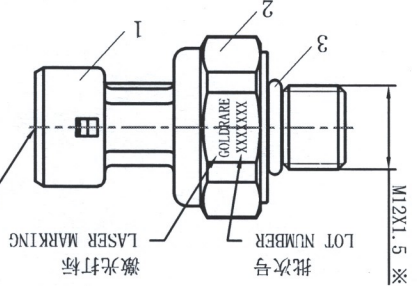


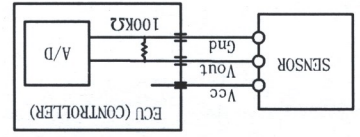
1. Envelope



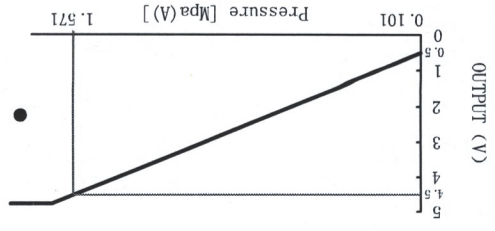
Mate with Delphi 12065287



2. Electrical Installation

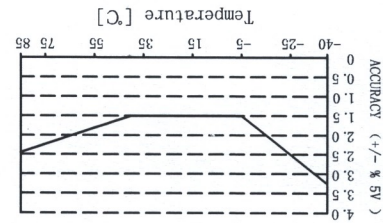


3. Output Characteristics



5. Specification

- Supply Voltage: 9~28 VDC
- Operating Temperature: -40~85 °C
- Storage Temperature: -40~100 °C
- Operating Pressure: 0.101~1.571 Mpa (A)
- Proof Pressure: 2.1 Mpa (A)
- Burst Pressure: 3.1 Mpa (A)
- Output Load: 100 Kohm Pull down
- Supply Current: 8 mA Max
- Protection class: IP65



The error in the range of -5°C~40°C is ±1.5% 5V.
Over this range, it follows:
T>40°C: ±1.5% [1+0.014*(T-40)] % 5V
T<-5°C: ±1.5% [1-0.033*(T+5)] % 5V

4. Output Accuracy

DATE	2018.12.26	ENGINEER	杨应南	TITLE	TRE-A1-FZ-2V184
DATE	2018.12.26	APPROVED	杨应南	DATE	2018.12.26
DATE	2018.12.26	APPROVED	杨应南	DATE	2018.12.26
DATE	2018.12.26	APPROVED	杨应南	DATE	2018.12.26
DATE	2018.12.26	APPROVED	杨应南	DATE	2018.12.26
DATE	2018.12.26	APPROVED	杨应南	DATE	2018.12.26
DATE	2018.12.26	APPROVED	杨应南	DATE	2018.12.26
DATE	2018.12.26	APPROVED	杨应南	DATE	2018.12.26
DATE	2018.12.26	APPROVED	杨应南	DATE	2018.12.26
DATE	2018.12.26	APPROVED	杨应南	DATE	2018.12.26

REVISION	ECN NUMBER	DATE	APPROVED
1	2018.12.26	2018.12.26	Qingwei Gu
2	2018.12.26	2018.12.26	Qingwei Gu
3	2018.12.26	2018.12.26	Qingwei Gu
4	2018.12.26	2018.12.26	Qingwei Gu
5	2018.12.26	2018.12.26	Qingwei Gu
6	2018.12.26	2018.12.26	Qingwei Gu
7	2018.12.26	2018.12.26	Qingwei Gu
8	2018.12.26	2018.12.26	Qingwei Gu
9	2018.12.26	2018.12.26	Qingwei Gu
10	2018.12.26	2018.12.26	Qingwei Gu